



SV-PRO

SV Pro Engineering SDN. BHD.
(1142547-D)

Email : svproeng@gmail.com

Address : Block S, Level 10, Unit 6, Kiara 163 Jalan Kiara,
51200 Kuala Lumpur

Tel : +60 19 – 396-8186 (PIC Mr. Reza)
: +60 3 – 2372 0719 (Office)



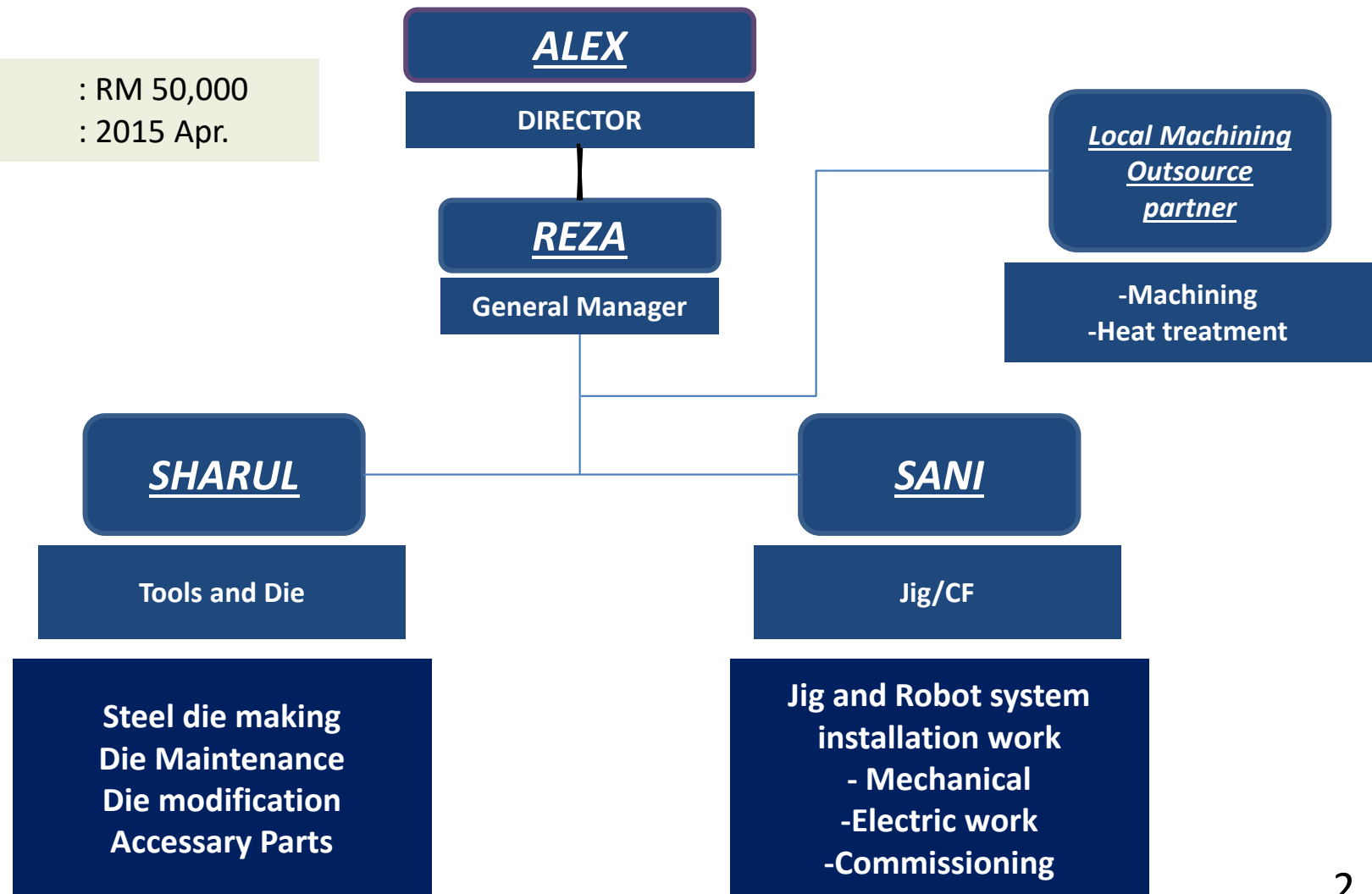
Company Introduction

- ❑ **SVPRO** has specialties in managing
 1. Die manufacturing , die maintenance activity , supplying spare parts
 2. Assembly line Jig and Robot system Installation work and commissioning work
- ❑ The objective of the establishment of **SVPRO** is to be a one stop center for dies and assembly jig specialist provider for Malaysians car maker.
- ❑ In addition to that, we serve our beloved customer not only by providing the best technologies, equipment and quality management services, but also we do our very best to *meet* our beloved customer *given schedule , targeted cost* and also *Quality target* in every stage of activity.
- ❑ **SVPRO** have a very strong team that we call consortium company that will working along with **SVPRO** in order to fulfill all the requirement needed by customer. This consortium company have been established through Malaysia Automotive industries for many project with OEM before
- ❑ In the future we believe that we not only can do our job for Malaysian car maker , but also we will strive our very best to get into Asian region and also worldwide.



Organization Chart

Company Capital : RM 50,000
Establish : 2015 Apr.





Manpower expertise

- ❑ SVPRO HAVE MANPOWER THAT HAS EXPERIENCE GENERALLY 10 ~ 15 YEARS IN DIES SERVICING. SVPRO MANPOWER ALSO NOT ONLY HAVE EXPERIENCE ON SITE ACTIVITY BUT ALSO ON ANALYSIS AND TROUBLESHOOTING ACTIVITIES FOR DIES IMPROVEMENT ACTIVITY

- ❑ OUR TEAMMATE AND TECHNICAL SPECIALTIES IS IN:

1. **DIE MAINTENENCE**

- I. SUPERVISORS SUPPLY
- II. TROUBLESHOOTING
- III. MACHINING PARTS AND BLOCK
- IV. SUPPLYING SPARE PARTS AND INSTALLATION
- V. DIES REFURBISHMENT
- VI. PREVENTIVE ACTION
- VII. HOME LINE TRIAL ACTIVITY SUPPORT

2. **ASSY JIG AND CF**

- I. MACHINING
- II. JIG TUNING
- III. QUALITY IMPROVEMENT
- LEVEL UP ACCURACY
- VI. JIG REFURBISHMENT
- V. SPARE PARTS SOURCING AND
INSTALLATION



1. **SUPPLYING MANPOWER FOR DIE MAINTENANCE WORK**

- Receiving feedback from customer regarding dies issue and problem
- Study , analyze and repair all related issue that had being highlighted by customer.
- Supported by overseas (Korea) and local die maker

| ACTIVITIES | ROLES AND RESPONSIBILITIES | DOCUMENT |
|----------------------------------|---|--------------------|
| MEETING WITH CUSTOMER | 1. GATHER INFORMATION ON HIGHLIGHTED ISSUE | 1. M.O.M |
| ANALYSE ISSUE AND FEEDBACK GIVEN | 1. MAKE REPORT AND STUDY ON WHAT ITEMS THAT NEED TO BE REPAIR | 1. ACTIVITY REPORT |
| SCHEDULE | 1. ESTIMATED TIME TO FINISH ACTIVITY (MUST INCLUDE CONTINGENCY PLAN) | 1. SCHEDULE |
| IMPROVEMENT | 1. IMPROVEMENT ACTIVITY ACCORDING SCHEDULE GIVEN | 1. PROGRESS REPORT |
| TRIAL ACTIVITIES | 1. TRIAL AFTER IMPROVEMENT ACTIVITY | 1. TRIAL REPORT |
| HANDOVER | 1. HANDOVER ACTIVITY AFTER JOB IMPROVED AND DONE | 1. SUMMARY REPORT |



2. PARTS & SPARE PARTS MANUFACTURING AND TECHNICAL SUPPORT

- Managing on Data checking support activity starting from die process planning up to handover to customer.
- Supported by overseas (KOREA) and local die maker

| ACTIVITIES | ROLES AND RESPONSIBILITIES | DOCUMENT |
|-----------------------------|---|--|
| PROCESS REVIEW SUPPORT | 1. TO DO CONFIRMATION ON DIE PROCESS ACCORDING TO DPP | 1. SUMMARY REPORT/M.O.M |
| PARTS & BLOCK MANUFACTURING | 1. MONITORING PROCESS FROM DESIGN UNTILL INSTALLATION PROCESS DONE | 1. SUMMARY REPORT/M.O.M |
| HEAT TREATMENT | 1. FOLLOW UP MAKER AND MONITOR ACCORDING TO SCHEDULE GIVEN 2. TO REQUEST MTRL CERT 3. VERIFICATION OF MTRL SPEC | 1. STATUS REPORT 2. MTRL CERT DOCUMENT 3. TESTING REPORT |
| TRIAL AT MAKER | 1. T0 ~ PDI ACTIVITY 2. BUY OFF BOOK 3. PROGRESS REPORT | 1. TRIAL REPORT FOR DIE |
| HOME LINE TRIAL | 1. L1 ~ LCT ACTIVITIES 2. 3 MTH MONITORING | 1. TRIAL REPORT FOR DIE |
| HAND-OVER | 1. HANDOVER CEREMONY MTG 2. SUMMARY REPORT | 1. SUMMARY REPORT FOR HANDOVER ACTIVITY |



3. ASSEMBLY JIGS MAINTENANCE SERVICE

- Jig improvement , Jig Modification and Jig Refurbishment activity for assembly line
- Supported by overseas (KOREA) and local JIG maker

| ACTIVITIES | ROLES AND RESPONSIBILITIES | DOCUMENT |
|---|--|---|
| PROCESS REVIEW SUPPORT | 1. TO DO CONFIRMATION ON JIG PROCESS ACCORDING TO PROCESS FLOW | .1. SUMMARY REPORT/M.O.M |
| LOCATOR BLOCK AND LOCATOR PIN MANUFACTURING | 1. MONITORING PROCESS FROM DESIGN UNTILL INSTALLATION PROCESS DONE | 1. SUMMARY REPORT/M.O.M |
| JIG & CF MAINTENENCE | 1. JIG REPAIR (ACCORDING TO CUSTOMER REQ) 2. JIG TUNING | 1. STATUS REPORT |
| TRIAL AT MAKER | 1. TO ~ PDI ACTIVITY 2. BUY OFF BOOK 3. PROGRESS REPORT | 1. TRIAL REPORT FOR TRIAL |
| HOME LINE TRIAL | 1. L1 ~ LCT ACTIVITIES 2. MONITORING & IMOROVEMENT | 1. TRIAL REPORT FOR TRIAL |
| HAND-OVER | 1. HANDOVER CEREMONY MTG 2. SUMMARY REPORT | 1. SUMMARY REPORT FOR HANDOVER ACTIVITY |



Outsource Partners

| Local partner | LOCATION | STRENGTH |
|---------------------|----------|---|
| DCM & VENUS TOOLING | KLANG | <u>MACHINING PROCESS ACTIVITY</u> 1. CNC MACHINE / LATHE / GRINDING / MILLING / WIRECUT/ EDM 2.Radial Drill |
| POWERNOX | SG CHOH | COATING |
| WAJA BISTARI | SG CHOH | COATING |

| Oversea partner | LOCATION | STRENGTH |
|-----------------|----------|---|
| SJ TECHWIN | KIMHAE | - Designer : 6, Engineer : 23 / - Casting and steel dies, Hot stamping die |
| MYUNGSUNG PROTO | ULSAN | - Prototype |
| NAMYANG TECH | CHANGWON | - PM : 2 , Design : 6, Engineer : 10 - Welding and assembly line |
| DONG A MODEL | KYUNGGI | - Engineers : 17 - Cubic jig, checking fixture, and inspection jig |